

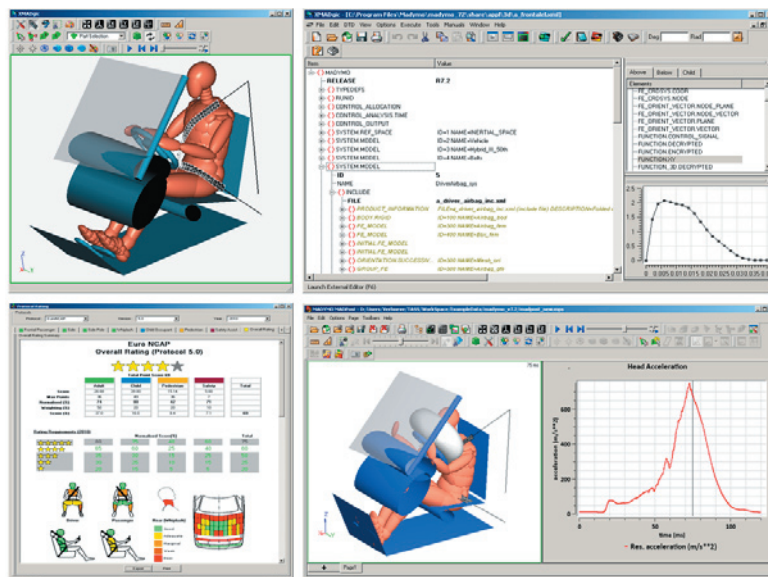
## MADYMO WORKSPACE

Create, edit, analyze & present

### TIME SAVERS

Most of the post-processing tools inside the Workspace suite can also be run in batch mode. Batch mode post-processing is particularly useful as part of automated DOE and optimization loops.

For example, batch mode post-processing of MADYMO simulation output could be used to optimize occupant restraint system designs over several load cases, through maximizing overall NCAP safety ratings.



WorkSpace is a suite of pre- and post-processing applications for creating and editing MADYMO models and for analysing and presenting simulation results.

### PRE-PROCESSING

The Workspace product suite helps the MADYMO user to easily set up and handle MADYMO models. Direct MADYMO XML input deck editing as well as graphical model manipulation is supported. Intuitive user interfacing facilitates MADYMO modelling for less experienced simulation engineers as well as for expert crash safety engineers that want to use MADYMO in co-simulation with FE crash codes. Pre-processing functionality also includes dedicated occupant safety features such as dummy positioning and seat belt fitting tools.

### POST-PROCESSING

Workspace post-processing functionality covers generic functionality for animation display, contour and graph plotting. Besides this, also more advanced and specialised functionality is included, such as energy flow analysis and signal-to-signal correlation rating. Dedicated occupant safety features include SAE signal filtering, injury criteria calculation and complete crash safety protocol rating and reporting.



**TASS Head Office**  
 T +31 888 277 000  
 F +31 888 277 003  
 E info@tass-safe.com

**Australia**  
 T +61 3 9558 6666  
 F +61 3 9558 6677  
 E info.au@tass-safe.com

**China**  
 T +86 21 5835 8036-ext 800  
 F +86 21 5836 0838  
 E info.cn@tass-safe.com

**Germany**  
 T. +49 711 2184 3108  
 F. +49 711 8924 4540  
 E info.de@tass-safe.com

**India**  
 T +91 80 4115 1512  
 F +91 80 4115 1511  
 E info.in@tass-safe.com

**Japan**  
 T +81 45 473 7955  
 F +81 45 473 7959  
 E info.jp@tass-safe.com

**Korea**  
 T. +82 70 8650 5220  
 F. +82 505 115 5220  
 E info.kr@tass-safe.com

**North & South America**  
 T +1 734 779 4850  
 F +1 734 779 4858  
 E info.na@tass-safe.com

**Scandinavia & Benelux  
 United Kingdom & Ireland**  
 T +44 1789 264 782  
 E info.uk@tass-safe.com

**Southern Europe**  
 T +33 17 0618 330  
 F +33 17 9974 891  
 E info.fr@tass-safe.com

**XMADgic**  
 MADYMO Dedicated XML Editor & Viewer

**XMADgic**

- Dedicated XML editor for MADYMO preprocessing
- Interactive graphical viewer
- MADYMO model validation
- Dummy model positioning + seat belt creation & fitting

**Coupling Assistant**  
 MADYMO & FE Harmonization

**COUPLING ASSISTANT**

- Preprocessor for MADYMO in co-simulation with other FE codes
- Fully graphical interface – no need for XML editing
- Wizard for MADYMO dummy model positioning
- Wizard for MADYMO seat belt fitting

**Exchange**  
 MADYMO Model Assembly and Modification

**EXCHANGE + EXCHANGE ASSISTANT**

- Easy MADYMO modeling without MADYMO experience
- Easy components exchange using model database
- Automated routines to reduce pre-processing time
- GUI & batch mode execution

**MADPost**  
 MADYMO Dedicated Post-Processing

**MADPOST**

- MADYMO dedicated post-processor
- Viewers for movies, kinematics, contour & curve plots
- Readers for several test & simulation output data formats
- Visualization of energy dissipation & flow in MADYMO models

**Protocol Rating**  
 Calculate safety protocol scores

**PROTOCOL RATING**

- Presentation and reporting of vehicle safety protocol ratings
- Rating generation from MADYMO dummy output or user input
- Many safety protocols (a.o. Euro NCAP, US NCAP, ECE & FMVSS)
- GUI & batch mode execution

**Objective Rating**  
 Quantifying Signal Correlation

**OBJECTIVE RATING**

- Tool for quantifying & rating signal correlation
- Multiple rating criteria & weighted rating combination
- Readers for several test & simulation output data formats
- Intuitive matrix display + reporting in html & odt formats
- GUI & batch mode execution

TASS provides software, engineering and test solutions to complex safety development issues. Building on over 30 years of crash test and vehicle safety experience, TASS offers a wide range of services and world-class products to meet your requirements. The TASS mission is "Be a leading company in advanced software solutions to enhance human safety by proving innovative software tools and customer-focused solutions". TASS delivers its solutions thanks to a worldwide network of offices and laboratories allowing, it to provide global solutions at a specialist local level. For more information, please contact your local agent or [www.tass-safe.com](http://www.tass-safe.com)

